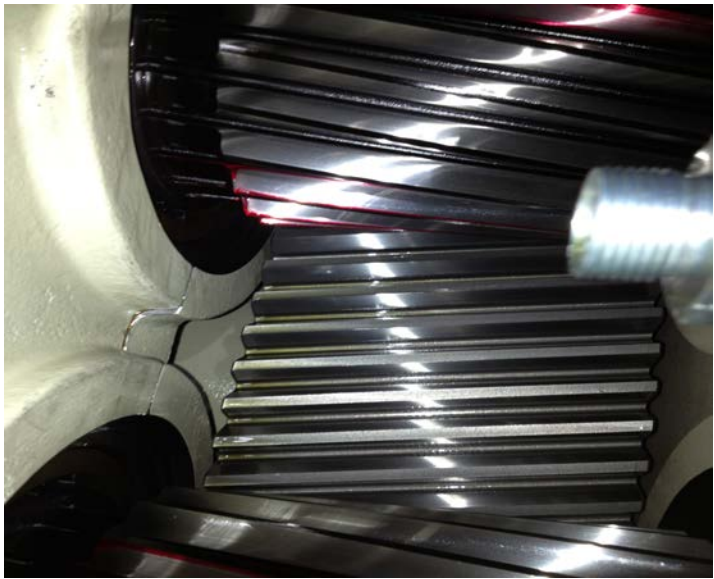




**MARINE SYSTEMS
MANAGEMENT, INC.**



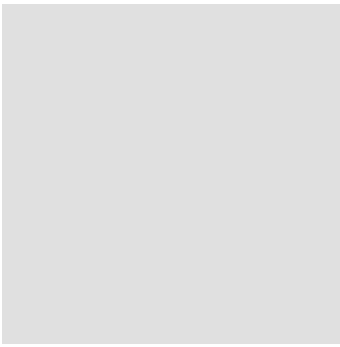
**Global Maritime Solutions Provider
since 2012**

**Service Disabled, Veteran – Owned, Small Business
CAGE Code: 6PHC7**

12701 Marblestone Dr., Suite 330: Woodbridge, VA 22192:
Tel: 619.559.0643
Tel: 619.559.0633

Email: makecontact@dwmsm.com

www.dwmsm.com



Expertise: Global coverage

D&W provides a unique skillset of marine engineering expertise projecting global solutions in repair, modernization, new-build delivery, activation, maritime-based operations, training, technical assistance, warranty support and port engineer services.

Our clients include domestic new-construction shipyards, foreign & domestic naval and coastal security activities, as well as foreign & domestic repair activities.

Our employees possess decades of maritime sailing (both commercial and military), mechanical & electrical engineering design, reverse engineering, failure mode and effects analysis, modernization and repair of vessels / port

engineering, wireless communications and electronics experience.

This experience portfolio precipitates core competencies providing one-stop-shop, deck-plate level technical leadership, maritime project management, international logistics solutions and owner representation - globally. We possess experience delivering these capabilities in multiple locations around North America and the Middle East.

We take pride in the opportunity to project this experience to clients with domestic and global interests. Our aim is to provide exceptional results wherever needed.

+ Emerging *premier* solutions provider:

Our firm's voyage began in the summer of 2012 providing on-board vessel operations and training for a foreign military sales case administered by Naval Sea Systems Command (NAVSEA) and Naval Air Command (NAVAIR). Our demonstrated abilities quickly allowed our firm to earn additional work providing marine engineering operations during builders and acceptance trials on domestic new build vessels, followed with additional work preparing vessels for tow, heavy-lift and ultimate delivery to the overseas customer.

Our employees provided seamless coverage for all engineering aspects, including all technical and logistics requirements for the entire engineering plant, covering the entire process of equipment lay-up, towing, heavy-lift loading, heavy-lift unloading, re-activation, re-activation trials and repair period, and ultimate delivery and demonstration of vessels to the foreign client.

We ensured successful delivery and acceptance to/by the client and since then, our team continues to provide exceptional in-country warranty support, underway operational training, technical assistance, logistics support, and operational support to the client. Our work ethic and deliverables validates our reputation and we take pride in continuing that trend.

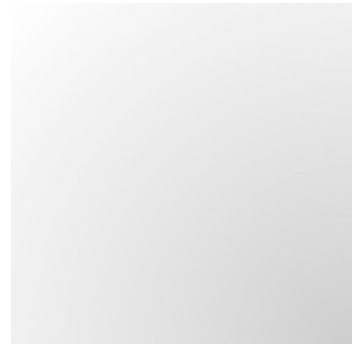
In addition to our current global maritime solutions presence, we possess significant expertise in mechanical robotic applications, including experience at the National Robotics Engineering Center (NREC) at Carnegie Mellon University.

We also provide engineering solutions relating to wireless technologies, recently undertaking a joint venture to modify existing communication receivers and providing prototype models that increase module output channel capacities by 25%.

Additionally, our wireless communications and electronic experience provides access to multiple emerging technologies providing access to low-energy, high efficiency LED lighting solutions for maritime interests.

Given our comprehensive talent level, we take pride in our ability to offer world class professionals. Our people are our most valuable resource and through them, we are able to offer the level of service and comprehensive solutions that we do. Our employees embody distinct, complementary and cohesive competencies resulting in distinguished and exhaustive client specific solutions. We recognize that to maintain our competitiveness we must sustain the ability to obtain and retain talented professionals and thus, we constantly seek individuals that can compliment our existing team and are able to carry the torch, so to speak, as we move into new opportunities of targeted growth and opportunities.

Complimentary to our standards, our teaming partners provide additional benefits when choosing our firm for your needs, allowing broad focused industry reach-back and long time industry leaders as mentors to our aim.



on scene expertise: *deck plate level support*

When a client hires our services, our deployment of resources will install effective communicators, capable of working across cultural barriers, congruently providing sound technical services commensurate with the latest maritime technologies and client's needs.

Our team of engineers carries with them a plethora of international experience, including OEM sales and services throughout Asia; owner's representation throughout North American East, Gulf & West coasts, as well as Middle-East Asia; foreign shipyard experience in Europe, Asia and Middle-East Asia; sound understanding of international maritime compliance policies, as well as domestic and international classification agency guidelines.

Our employees maintain active professional engineering licenses and United States Coast Guard

licenses, and ALL carry some form of advanced degrees and training in mechanical or electrical design, OEM specific equipment training, business and other trade specific training. It is our aim to supply solution providers on the deck plates that not only carry past experience from other platforms and methodologies, but will also bring client-specific focused training that will promote realized efficiencies and greater mission penetration.

Our work ethic aims to provide proven results to the client from the grass-roots level of relationships to empirically-measured results. Our performance on the playing field is paramount to our success and it is where we shine. We make short work of asymmetric challenges and know how to effectively communicate viable options that better identify stakeholder solution paths.



Effective methods:

Our unique experience set promotes creative problem solving and 'out-of-the-box' thinking. Perhaps our greatest example of such experience is our firm's presence in Iraq, where nearly all forms of progress must occur in spite of un-conventional barriers. It is our firm's ability to reach across these barriers and, in some cases, completely eliminate them through creative problem solving which allows our services to stand out and most importantly – achieve goals.

Through such experiences, our firm brings effective problem solving methods to the table and allows client expectations to remain high. We want to earn the responsibility of success and the opportunity to help prospective clients excel past barriers that may otherwise stymie progress.



Accessibility:

All of our employees are authorized to maintain DOD issued common access cards and either hold or are capable of holding DoD security clearances. Additionally, all employees maintain TWIC and other maritime related credentials.





marine engineering spectrum:

we cover all your needs



Logistics.

Getting equipment, spares and needed consumables to assets across the globe can be a daunting task. We have experience and know-how in working in logistically challenged regions in the world and understand the importance of knowing how to navigate through subjects like end-user agreements, ITAR and goods and services embargoes.

Identifying the proper requirements is amplified when working in 'hard to reach' areas and is an area in which we excel. We also provide support on the receiving end through inventory control practices. We have multiple logistics partners - both foreign and domestic - that can provide just about any needed part to meet our client's needs.



Heavy Marine Projects.

We can provide technical advice and the correct level of oversight rigor on just about any major industrial repair. We have multiple decades of experience of planning & executing overhaul periods of all marine equipment, including widespread hull replacement, shaft repairs, propeller repairs, engine overhauls, stern tube replacements, tank repairs and HVAC modernization. We also specialize in preparing vessels for delivery and heavy-lift.

Additionally, we have qualified engineers experienced in marine coatings who have experience with R&D projects involving Naval Research Laboratories test and evaluations of new generation coatings in conjunction with leading coatings suppliers.



Operations & Training.

Our employees possess licenses such as Professional Engineer and USCG qualified engineering-department crew members for any tonnage, any horsepower, steam, diesel or gas turbine plants, and any combination thereof. Our employees are experienced on nearly every type of major commercial application, and have served as active-duty officers or performed as **Port Engineers** for nearly every type of US Navy vessel in the current fleet.

Our operational background and ability enables us to operate and/or train in multiple plant designs in great detail, complimenting our extensive abilities in the repair and modernization arena. We leverage experiences such as training foreign Navies to operate newly delivered vessels to demonstrate our mission reach.



Qualified, Committed, Effective:

Qualified: We refuse to take on a job for which we are not qualified. **Committed:** Once we take on a job, we are committed with every resource necessary to achieve the goal(s). **Effective:** We aim to achieve goal(s) in the most efficient manner using best practices or inventing new and ethical practices, as required.



Advanced Methods:

Our tool kit consists of advanced methods, such as: failure mode and effects analysis, mean-time between failure analysis, reliability-centered maintenance, reverse engineering, finite element analysis, closed-loop logistics supply chain, just-in-time delivery.



Sound, Basic Engineering Foundation:

Our professionals discern the correct method to achieve goals for the right price, at the right time. These values are not lost on us. Despite the allure to force feed advanced methods, we understand that, often times, sound, basic engineering methods prevail most efficiently in tackling problems, and can out-perform advanced methods in some applications. Our employees' experience level allows us to effectively differentiate.



Classification Agencies:

We are experienced in navigating Classification Agency requirements and can benefit the client by advising appropriately of such. Whether NAVSEA, ABS, Lloyds, Chinese Classification Society (CCS) or other agencies – our employees have the experience and know-how to protect the client through the correct technical support and advice.



Global Networks:

By leveraging our team's domestic and international experience, prospective clients can utilize our global contacts that include many major OEMs, major shipyards, service providers, husbandry agents, logistics hubs, partner agencies and teams, as well as general professional network contacts the world over. We provide meaningful strategic reach-back into locations such as Washington DC, Norfolk, New York, Boston, Detroit, Tampa, Houston, New Orleans, San Diego, Los Angeles, San Francisco, Bremerton, Honolulu, Glasgow, Frederikshavn, Naples, Cape Town, Dubai, Bahrain, Baghdad, Basra, Umm Qasr, Mumbai, Yokosuka, Sasebo, Singapore and Kuala Lumpur.